

← Attach both ends together
to form a loop and staple here →

fold line 1



0344 815 3000



NAME:
BOOKING REFERENCE:
DESTINATION:
HOTEL:
JOINING POINT:

Max Weight Limit 20kg



← Attach both ends together
to form a loop and staple here →

fold line 1

fold line 2

Your Luggage Label

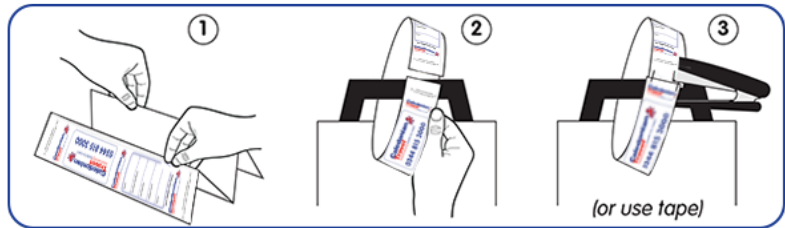
INSTRUCTIONS:

1. Print off as many labels as you need (preferably in colour)
2. Enter your details onto every label
3. Fold along all of the fold lines starting at Fold 1 all the way to Fold 3 in a concertina so that the front of the label (with your details) is on the front
4. Wrap this around the handle of your case so this forms a loop around the handle and staple (with 2 staples) or use tape to secure each end to each other as indicated.

You can further weatherproof your label by covering it in sellotape.

Don't have a printer?

Not a problem simply attach your own luggage label to your cases.



fold line 2

fold line 3

fold line 3